

## Digital Camera Family

As a microscopy product independent manufacturer, Visitron Systems GmbH offers most flexible imaging systems based on color or monochrome digital cameras for Histology or Fluorescence analysis. All known camera manufacturers like Teledyne /Photometrics, QImaging, Andor, Hamamatsu, PCO or our own OEM VisiCam are offered in combination with our VisiView® Microscopy Imaging Software.

Our range of supported cameras, for any kind of microscopy applications and documentation of imaging, ensures that you will find the real combination of specifications that match your requirements.

## Visitron

### Digital Camera Family

### VS-FluoCa BioHD CMOS



Example of camera family with Photometrics, PCO and VisiCAM cameras

## VS-FluoCa BioHD CMOS Cameras

The VS-FluoCa CMOS cameras extend the Visitron Systems supported digital camera family with standard and with cooled versions. There are monochrome and high resolution color sensors available up to 16MPixel resolution.

These new camera models are perfectly tools for Histology / Histopathology or fluorescence video microscopy application. In addition these camers models can also be used to upgrade older existing **SPOT** cameras, which went out of 64bit software support.



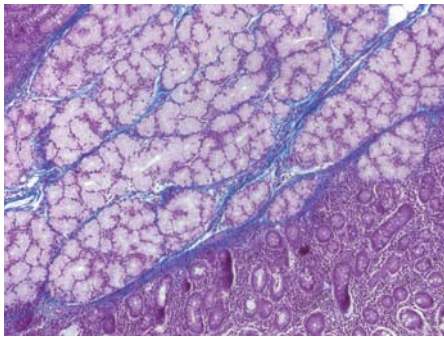
# Visitron

## Digital Camera Family

### VS-FluoCa BioHD CMOS

#### Microscope Imaging Cameras BioHD CMOS - Performance for a Low Price

The CMOS sensor technology extend the wide range of available sensor formats e.g. up to 16MPixel with pixel size of 2,4x2,4  $\mu\text{m}$  to 6,5x6,5  $\mu\text{m}$ . Very compact camera design offers a flexible usage with very little space. With the cooled camera version also weak fluorescence can be imaged with a dynamic of 8 or 12 bit. Typical frame rate with USB3.0 interface are about 50 frames/second.



#### VS-FluoCa BioHD-C16 16Mpix color CMOS Cameras

Standard CMOS camera color for high resolution histology application

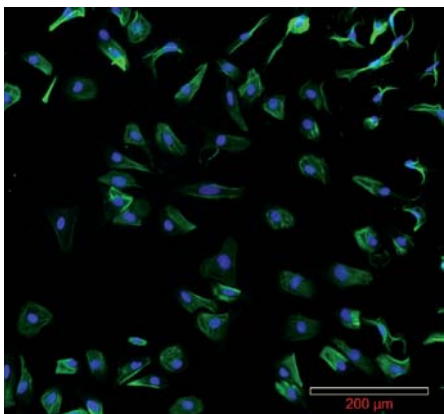
- » 4640 x 3506 Pixel, 3,8 x 3,8  $\mu\text{m}$
- » CMOS color sensor
- » global shutter mode
- » 8/24 bit dynamic
- » 22 full frames/sec
- » C-mount connector
- » USB 3.1



#### VS-FluoCa BioHD-EPHYS 2.3Mpix CMOS Cameras

Standard CMOS camera monochrome for widefield application

- » 1920 x 1200 Pixel, 5,68 x 5,68  $\mu\text{m}$
- » CMOS monochrome sensor
- » global shutter mode
- » 12 bit Dynamic
- » 60 full frames/sec
- » exposure time: 1ms to about 60 second
- » C-mount connector
- » USB 3.1



#### VS-FluoCa BioHD-A07 7.04Mpix CMOS Cameras

Cooled CMOS camera monochrome for fluorescence application

- » 3200 x 2200 Pixel, 4,5 x 4,5  $\mu\text{m}$
- » CMOS monochrome sensor
- » global shutter mode
- » 8 / 12 bit Dynamic
- » cooling -10° at 20° room temperature
- » 50 full frames/sec // 8 bit mode
- » 27 full frames/sec // 12 bit mode
- » exposure time: 100us to about 100 second
- » C-mount connector
- » USB 3.1