

VisiScope Cell Analyzer Imaging System

VisiScope Cell Analyzer

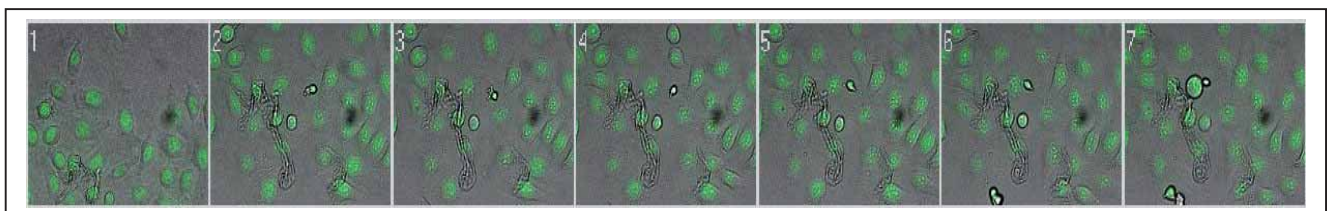
Multidimensional Cell Based Imaging System

The use of microscopy and fluorescence imaging in science is one of the most important technologies to analyze structure and fundamental function in cells. New proteins and GFP derivatira allow the investigation of living cells in more details about localization and temporal depending functions. For this detailed analysis a high throughput of samples with special biological assays are required to get the best possible statistically accurate results.



The VisiScope Cell Analyzer is designed as a multidimensional cell based imaging system. The cell culture is usually located in a 96, 384 or 1536 well-plate. The cells are labeled with different fluo-chromes for each cell component. With admixing of e.g. inhibitory substances the expres-sion of the labeled components will be increased or decreased.

This makes intracellular metabolisms visible and could be measured by fluorescence quantification. The VisiView software controls all motorized hardware components. Quantification, measurement and storage to database format are standard functions of the software.



VisiScope Cell Analyzer System Components

- High-end microscope with excellent optic and motorized components
- Objective 5x; 10x; 20x; 40x (optional DIC and Phase)
- High resolution digital camera with best sensitivity and cooling
- Motorized XY or XYZ-stage with highest positioning accuracy
- High speed DC filter wheel with 10 filter position
- High accuracy z-focus (optional high speed piezo system)
- Digital autofocus
- Powerful imaging VisiView[®] software including full automatic control of all components

Optional:

- Incubation and CO² system
- cell culture conditions and closed incubation chamber
- VisiChrome high speed polychromator for Ratio analysis
- LED Illumination

