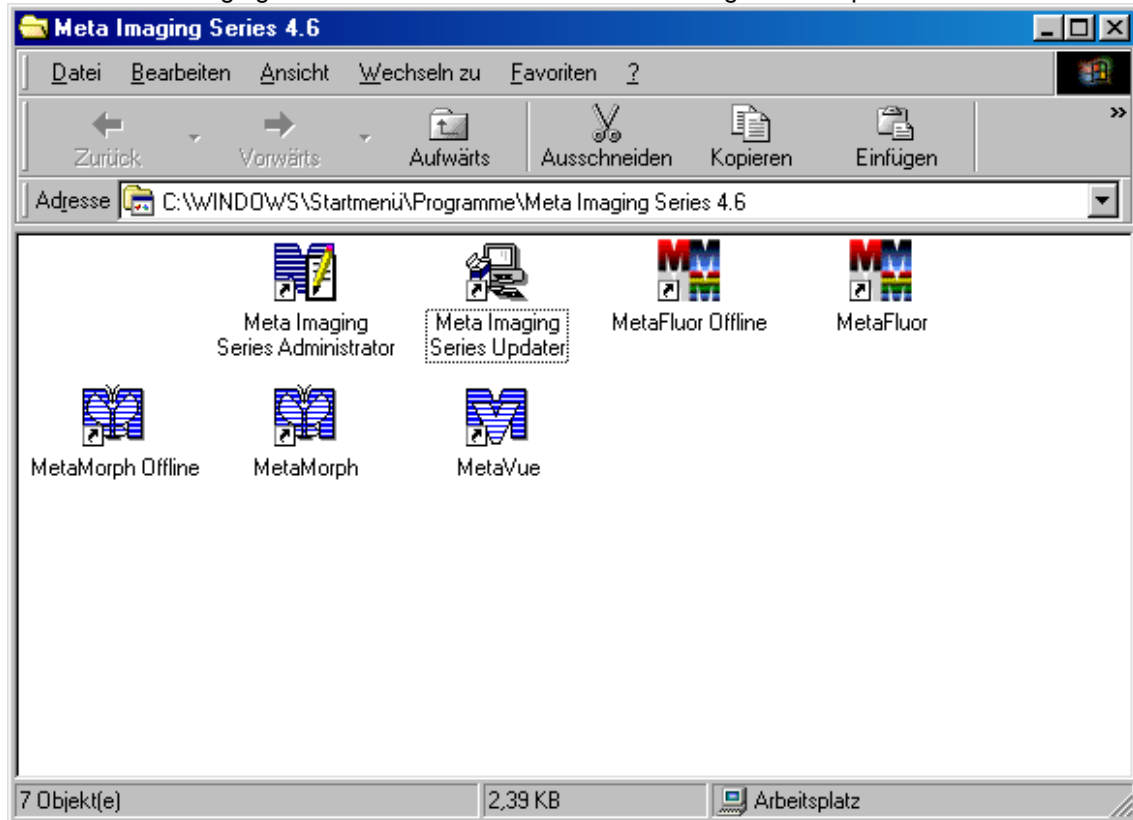
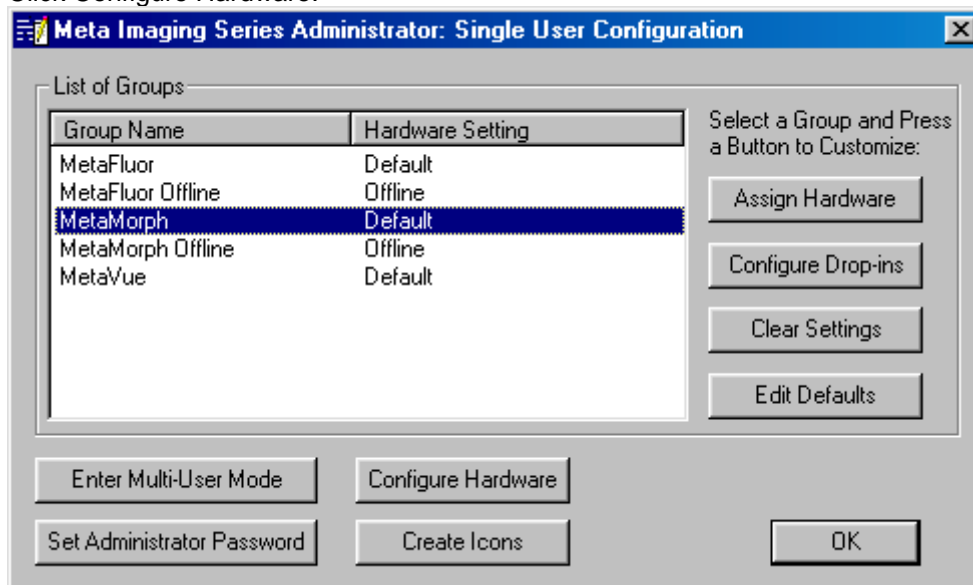


Activate the Uniblitz Shutter Driver

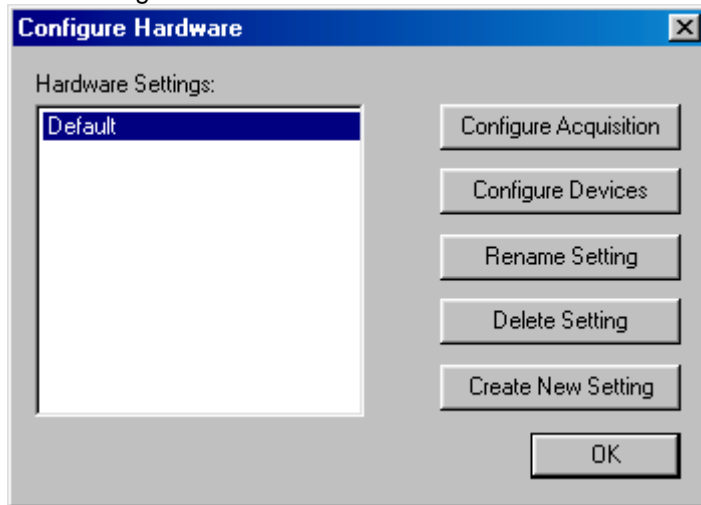
Run the Meta Imaging Series Administrator from the MM Program Group:



Click Configure Hardware:



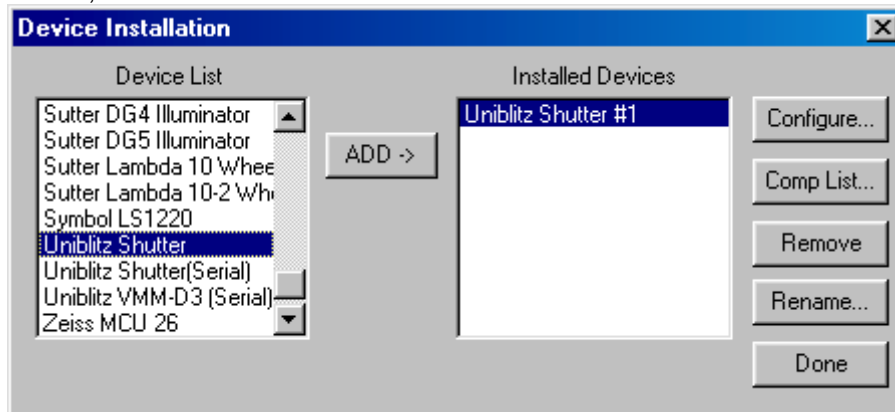
Click Configure Devices



Click Hardware Drivers:



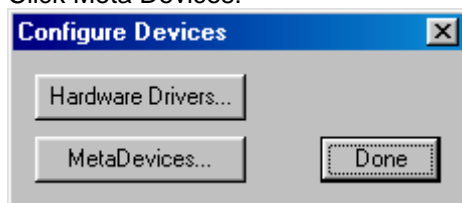
Select 'Uniblitz Shutter' and click ADD:



Select Pin 14. Click OK and then DONE:



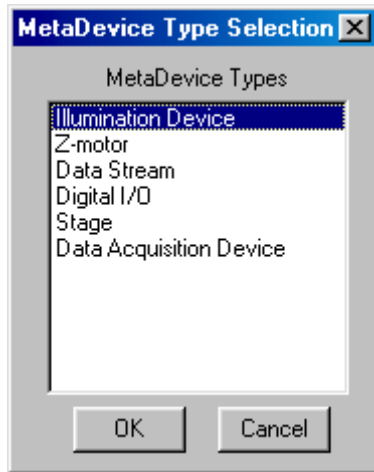
Click Meta Devices:



Click New:

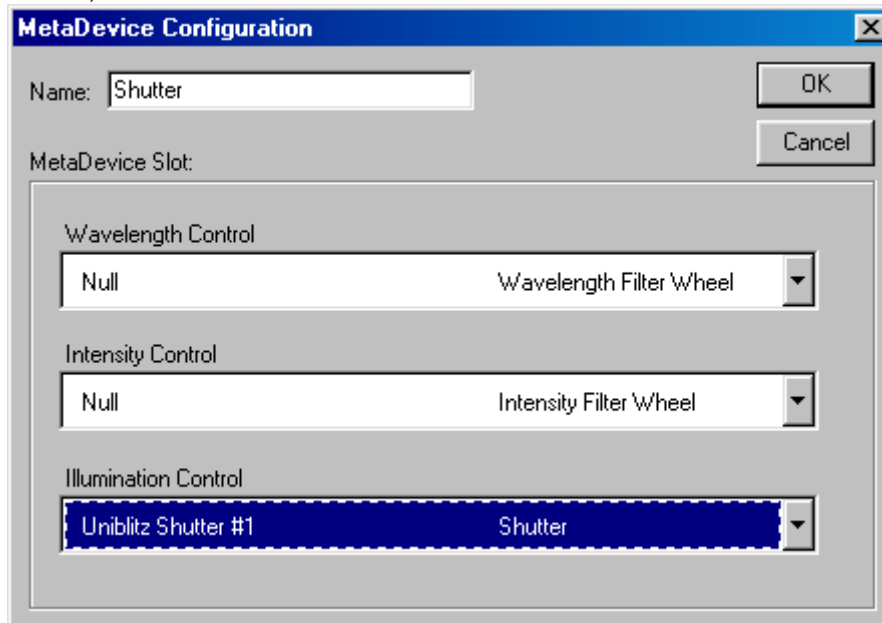


Select Illumination Device:



Enter a Device Name, e.g. ,Shutter'.

Select ,Uniblitz Shutter #1' as the shutter:



Done:



Quit the Administrator.

In MetaMorph, you can control the shutter with

Devices->Illumination Device

Select the shutter device and click OPEN or CLOSE

In Acquire, you may enter the SHUTTER as 'External Shutter Linked to Camera'.

Then, the shutter will open for the acquisition and close automatically.

