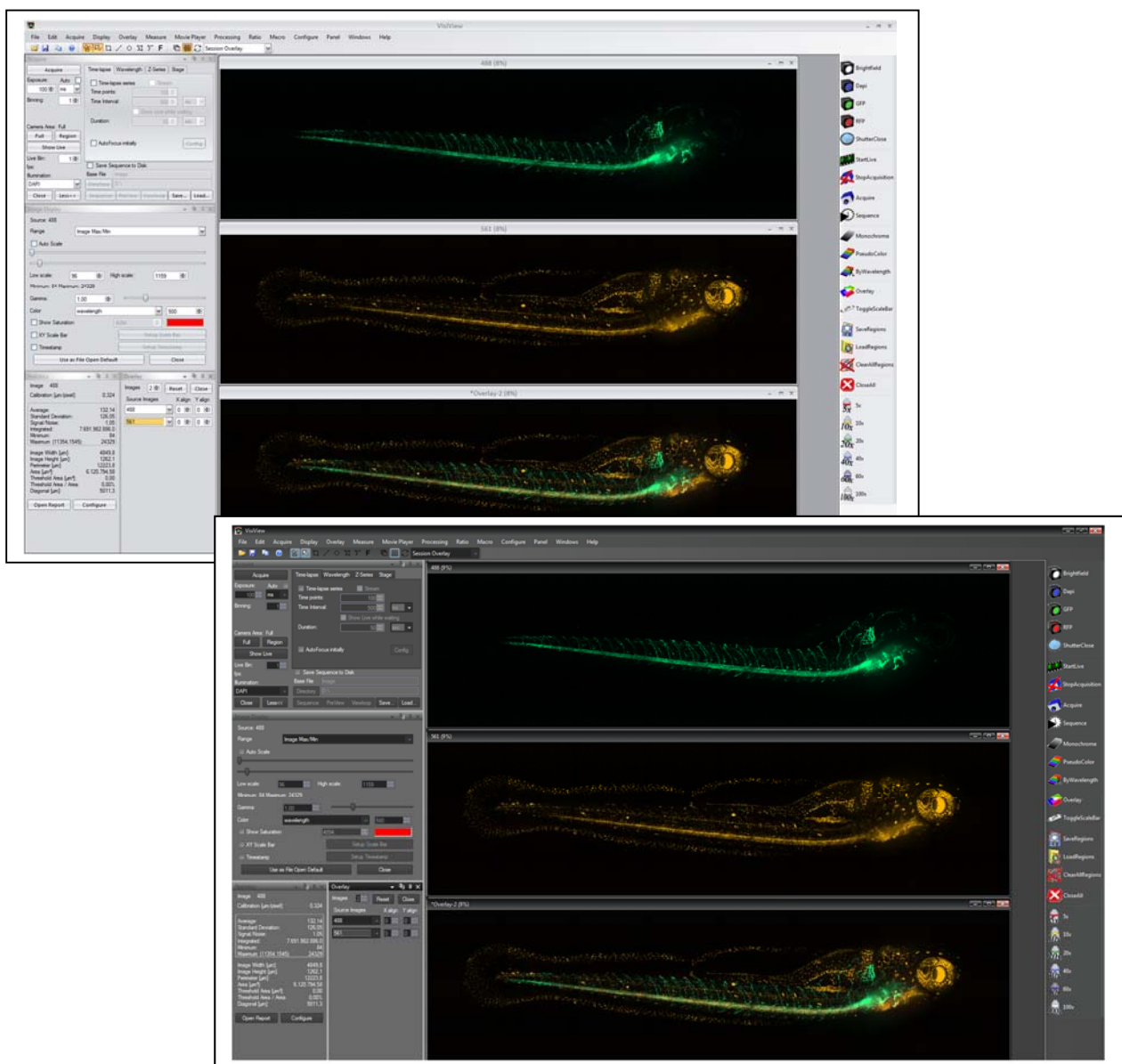


VisiView with "High Contrast" Display and Dialog Docking Function

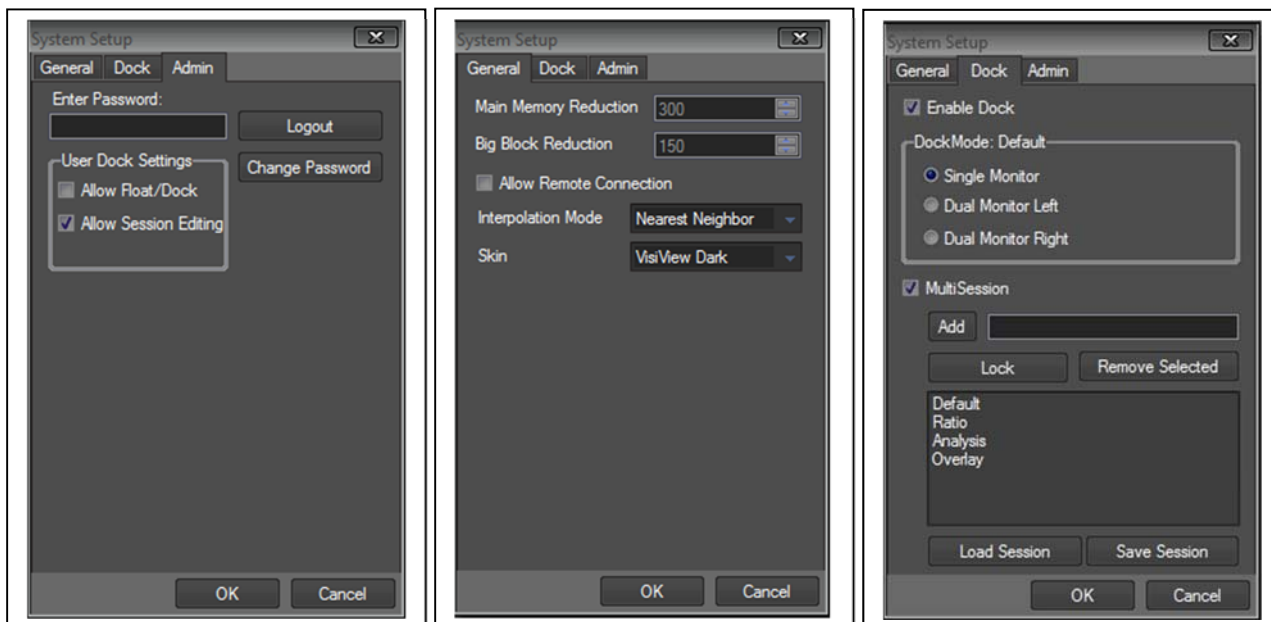
The new VisiView 4.0 design meets the requirements of today`s independent microscopy imaging software. The flexible dialog docking function allows easier and more organized overview of all control and analysis information. The Display mode in different colors or inverted black/white mode facilitates working in dark rooms with its low background light and maximum contrast.



Example of Dialog docking left side with normal or inverted dark Display

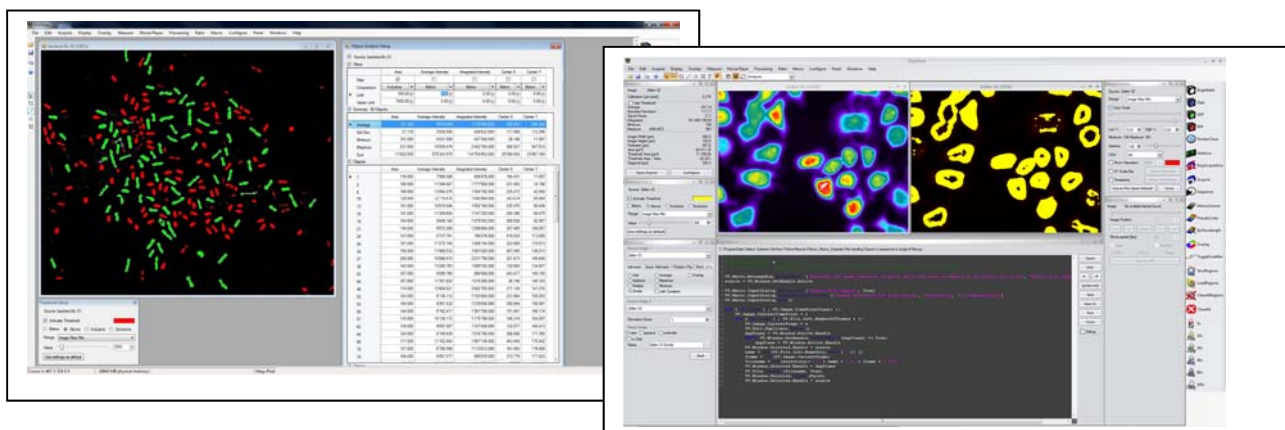
System configuration:

System Setup allows the selection of “Float” or “Dock” conditions. In the “MultiSession” setting, each user can define several sessions. This way, the user can quickly switch between different dialog arrangements like standard or FRAP acquisition, data analysis and many more. And finally all setting can be password-protected by the administrator.



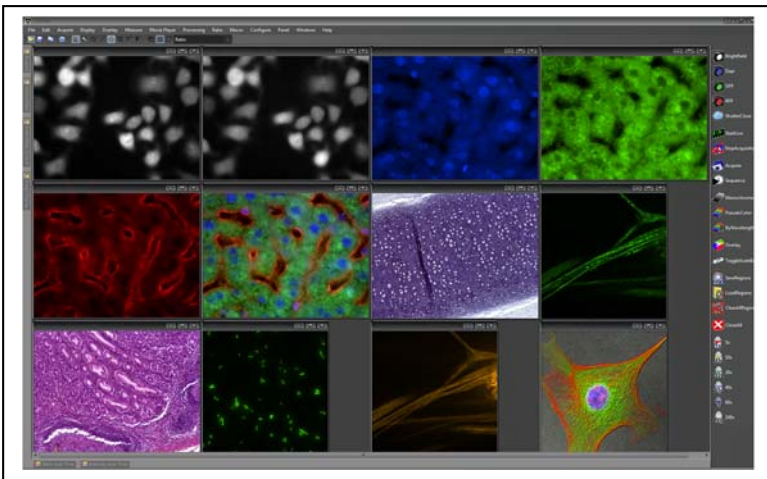
New Features:

- Flexible dialog docking
- Autohide mode
- Easy switching between float and dock mode
- Administrator setup with password protection
- Autoarrangement of images
- New and user-selectable image interpolation modes
- New panel control

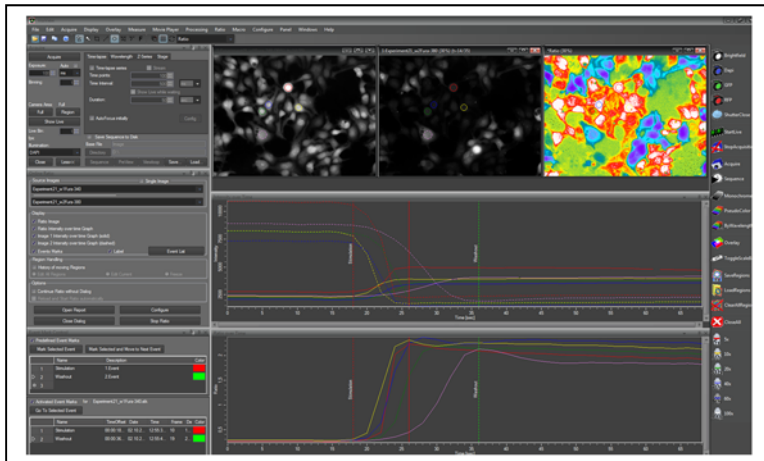


Left dialog floating mode and right dialog docking mode

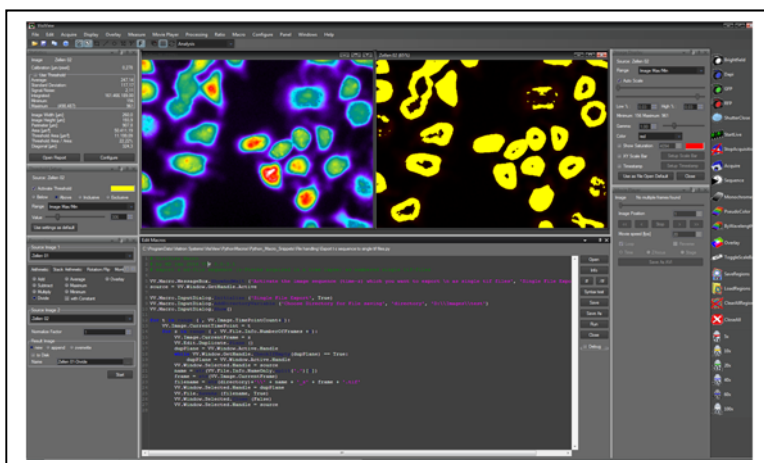
Application Examples:



Example Auto-arrangement of images



Example of On-Line Ratio application with image and graph display



Example analysis with Python programming